



LYNDA HYDE

Press Kit

ABOUT LYNDA HYDE



Lynda Hyde has had a career in the Arts for over 40 years, as an artist, set and costume designer and as a performer in Contemporary Dance, Mime & Magic. On leaving school she trained in drafting and worked for a time in the Australia Square offices of Australia's foremost modernist architect Harry Seidler. This led to a fascination with the geometric form and modernism, which she then explored through painting, dance and graphic design.

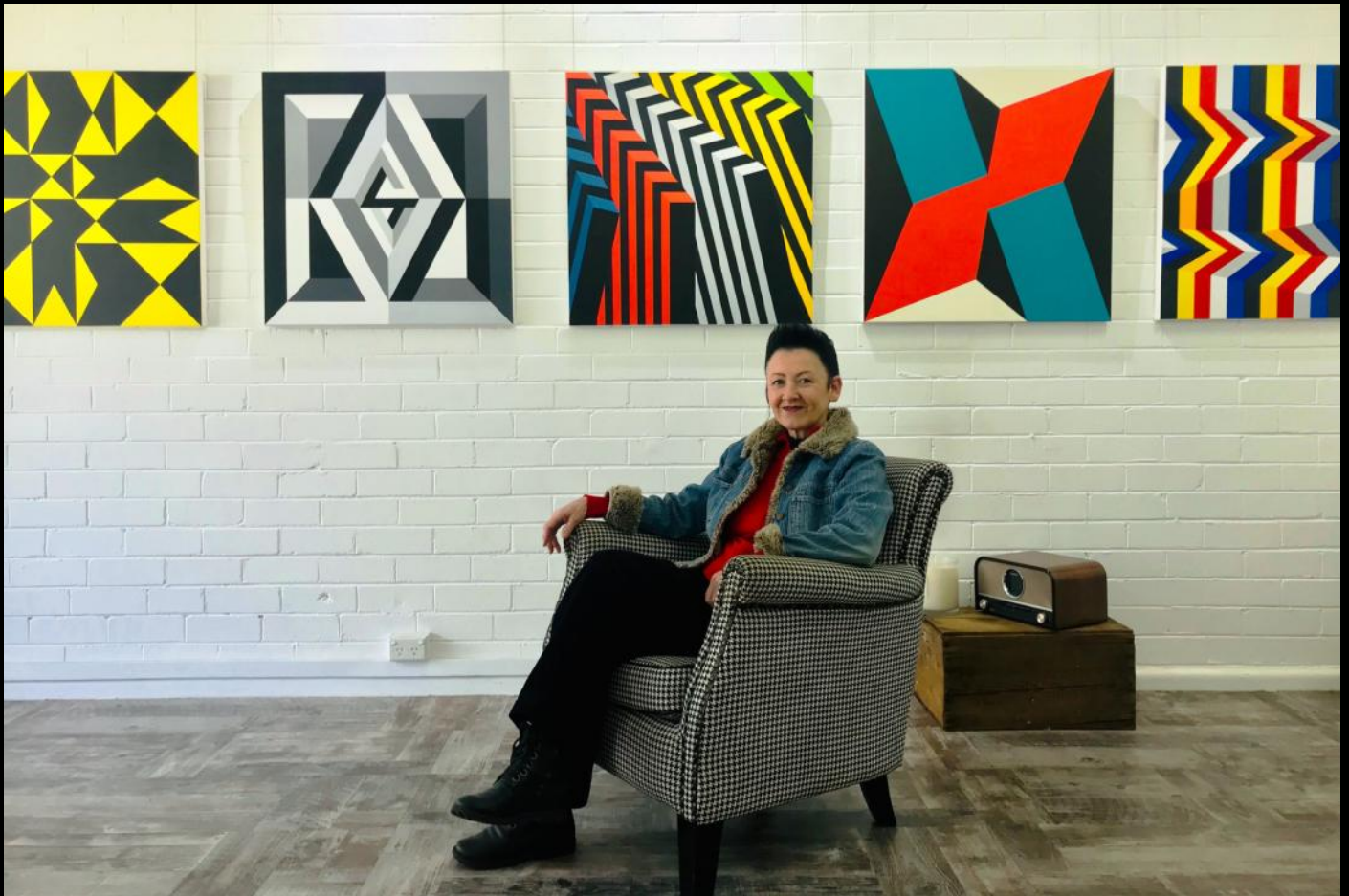
She also worked with her husband Timothy for many years in their entertainment company Achieving the Impossible, travelling and performing Magic and Illusion Shows extensively in Australia and abroad. Highlights included performing as the opening act for entertainment legends - James Taylor, Whoopie Goldberg and Shirley MacLaine. As well as performing, Lynda was responsible for the companies costume, prop and set design using her design skills in publicity and promotional material. She also freelanced for many other performing artists and companies.

As a Printmaker she spent many years exploring the "Reduction Process" also known as "Suicide Prints." She is currently experimenting with bolder block prints, using positive and negative space, different colour combinations and orientations to create stunning modernist style, limited edition prints.

Her current paintings are larger Geometric Abstractions in acrylic. These explore the Perception of Movement, Shifting Planes and Points of Focus. There is an intersection between Op Art, Hard-edge Geometric Abstraction and Colour Field painting that she loves and her larger works reflect this.

The work grows from the early European pioneers in the field of Perceptual Abstraction; Victor Vasarely, the father of the Op Art movement, and Zanis Waldheims and his "Geometrization of the Exhaustive Thought."

Her last three Solo Exhibitions were all Sold Out and her work is held in private & corporate collections around Australia, Hong Kong and in the USA.



Press Quotes

Dizzying and entrancing! Lynda is continually experimenting with bolder colours, new relationships between positive and negative space and alternate orientations to create a body of work that is diverse and unexpected.

Art Edit Magazine Issue 245 Autumn 2020

Colour Field Eleven investigates Lynda Hyde's current focus into the use of visual deception, optical depth and the perception of movement. Through a clever manipulation of line and colour, Hyde is able to create optical illusions where the paintings appear to move, bulge and recede. The colourful paintings attracted interest from local and international buyers, who quickly snapped up all the available works. Anala Art Advisory Gallery manager, Sarah Birtles said they were "thrilled at the rapid success for Lynda" and "were very confident going into the exhibition and so pleased that our clients have supported her first solo show with Anala".

Blue Mountains Gazette August 2019

Lynda Hyde paints bright Geometrical Abstracts exploring Op Art and Hard-edge Colour Field painting. Her new exhibition, "3D," is a series of small paintings inspired by 5 historical pigments that were either outrageously expensive, incredibly difficult to make or just downright deadly.

Sergio Gomez - Amplified Art Network November 2019



Plane Paper I - VII Block prints on Washi Paper 30 x 30cm. 2019

Artist Statement

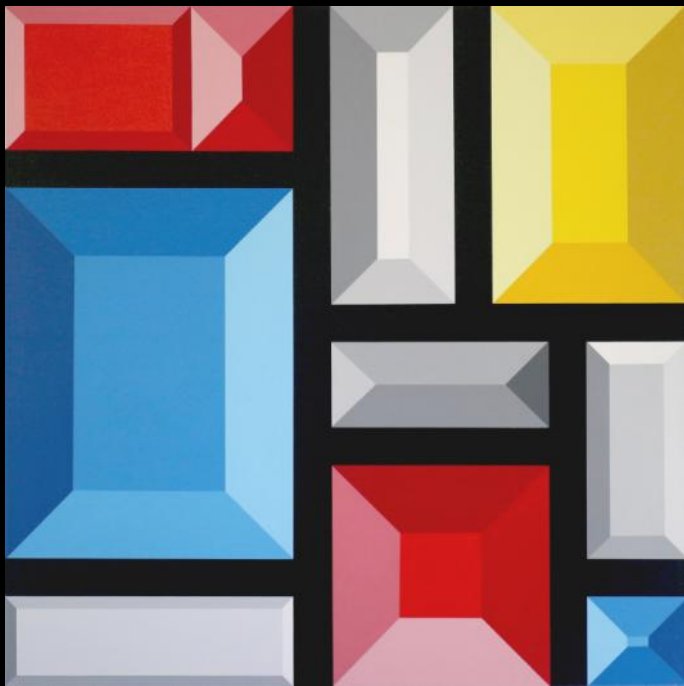
Being a child of the Mid Century, I've held a lifelong fascination with modernist design and hope my work continues to convey that era's strong sense of optimism, happiness and fun, traits that are somewhat lacking in these current times.

This is an area I have been exploring in my practice since the 1970's, using traditional techniques and equipment from my background in drafting to create hard edged geometric paintings and modernist style prints that explore tricks of the eye.

Designed to both amuse and intrigue, they also reflect my long term career in performing magic and illusion shows. The paintings include a planned element of surprise or visual deception, and often a perception of movement that is either subtle or quite bold.

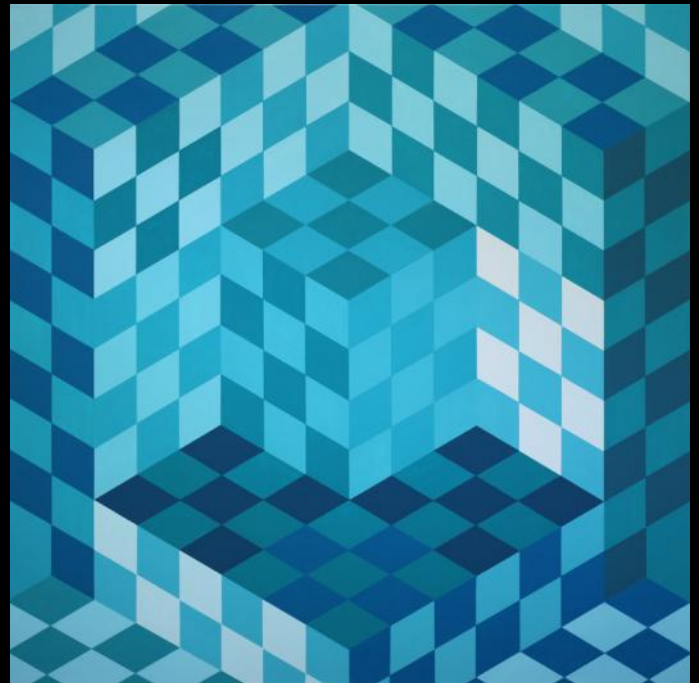
Music is also important to me while I paint and this is often reflected in the rhythms, structure and composition of the works and sometimes in the titles.

Vibrant colours, bold patterns and music can all take your mind to another state and if I can take the viewer to a happier more optimistic place or perhaps to see a sense of order in a world of chaos, then I've performed for them a different sort of magic.



Messin' With Mon
Acrylic on Canvas, 90 x 90cm
2019

Graduation of Gravitation
Acrylic on Canvas, 90 x 90cm
2019



The Shakin' Starts Here
Acrylic on Canvas, 90 x 90cm
2019



Pop Op Brady
Acrylic on Canvas, 120 x 90cm
2019



Throwin' Shadows
Acrylic on Canvas, 120 x 90cm
2019



Lynda Hyde CV

Exhibitions, Collections, Press, Training, Employment, Performance, Galleries, Contact.

(Printable version of CV, Bio and Artist Statement available on [website](#))

Solo Exhibitions

- 2019 "3D - Desirable, Dazzling, Deadly" The Brink Studio, Hazelbrook
"Colour Field Eleven" Anala Art Advisory, Glenbrook
"Colour Field Seven" Braemar Gallery, Springwood
- 2018 "Colour Field Five" Atelier Gallery, Lawson
"Between the Lines" Atelier Gallery, Lawson
- 2014 "Travelogue in Lino" Number 47 Gallery, Rylstone

Group Exhibitions

- 2011 Trapezium Gallery, Kingswood
2010 Springwood Arts Centre
1988 Waverley-Woollahra Arts School
1987 St George Potters Group
1978-'83 SMAC Gallery, Croydon

Collections

Private - Collections throughout Australia and in the USA (California and Las Vegas)

Institutions - TAFE WSI,

Corporate - Ovolo Hotel Group (Australia & Hong Kong)



Press

- 2020 Art Edit Magazine <https://lyndahydeart.com/feature-in-art-edit-magazine/>
- 2019 Amplified Art Network [3D – Dazzling, Desirable, Deadly](#)
- 2019 Blue Mountains Gazette [Lynda Hyde's Magic Sell Out](#)

Training

- 2012 Master Printmaking WSI NADC
- 2011 CIV Fine Arts WSI NADC
- 2010 Digital Photography, Springwood Community Arts Centre
- 1988 Relief Printing, Waverley-Woollahra Arts School
- 1987-1988 Ceramics, St George Potters Group
- 1976-1977 Drawing at Randwick Technical College
- 1972 Drafting at Sydney Technical College

Employment

- 1980-2018 Performer, Designer - Achieving the Impossible
- 2011-2018 Newtown High School Performing Arts - Art, Drama & Music Depts
- 2015-2017 Design Work on 13 eBooks - Cover Art, Layout & Design
- 1978-1983 Owner/Manager Strand Music & Arts Centre, Croydon
- 1972-1984 Freelance Drafting Contracts

Performance, Costume Design, Set Design, Stage Coordination

Highlights Include -

Opening Act for - James Taylor, Whoopie Goldberg and Shirley MacLaine.

Kinetic Energy Dance Company - "Intersections" and "Solo Series"

Magic Consultant for - Tommy the Musical & WASP at Belvoir St Theatre

Sydney Royal Easter Show - 2 Years Costuming & Coordination of Colgate Stage,

Lithgow Halloween 2017-2020 - Costumes, Stage Management, Costume Judge

Australia's Wonderland - "Yogi's Magic Show" & "Magic Spectacular"

Clarendon Theatre - Numerous Productions including "Cabaret of Dr X"

Canberra Festival / Floriade - Numerous Events

Smallest Circus on Earth - Numerous School Productions & Theatre Shows

Queensland, French and Hong Kong Tourist Bureaus - Costumes & Appearances for 3 Years.



Exhibition Openings



Current Galleries

Anala Art Advisory, Glenbrook NSW & Castlemaine Vic, Australia

LISP - Artist Collective, Sydney / Frankfurt



Colour Field Eleven Opening 2019 Anala Art Advisory

Contact

Lynda Hyde

PO Box 19 , Hazelbrook NSW, 2779, Australia

Phone - 0422 921515

Email - art@timothyhyde.com

Web - <https://LyndaHydeArt>

Instagram - [@LyndaHydeArt](https://www.instagram.com/LyndaHydeArt)

Timothy Hyde (Studio Manager/Marketing)

Phone - 0408 979 594

Email - timothy@timothyhyde.com